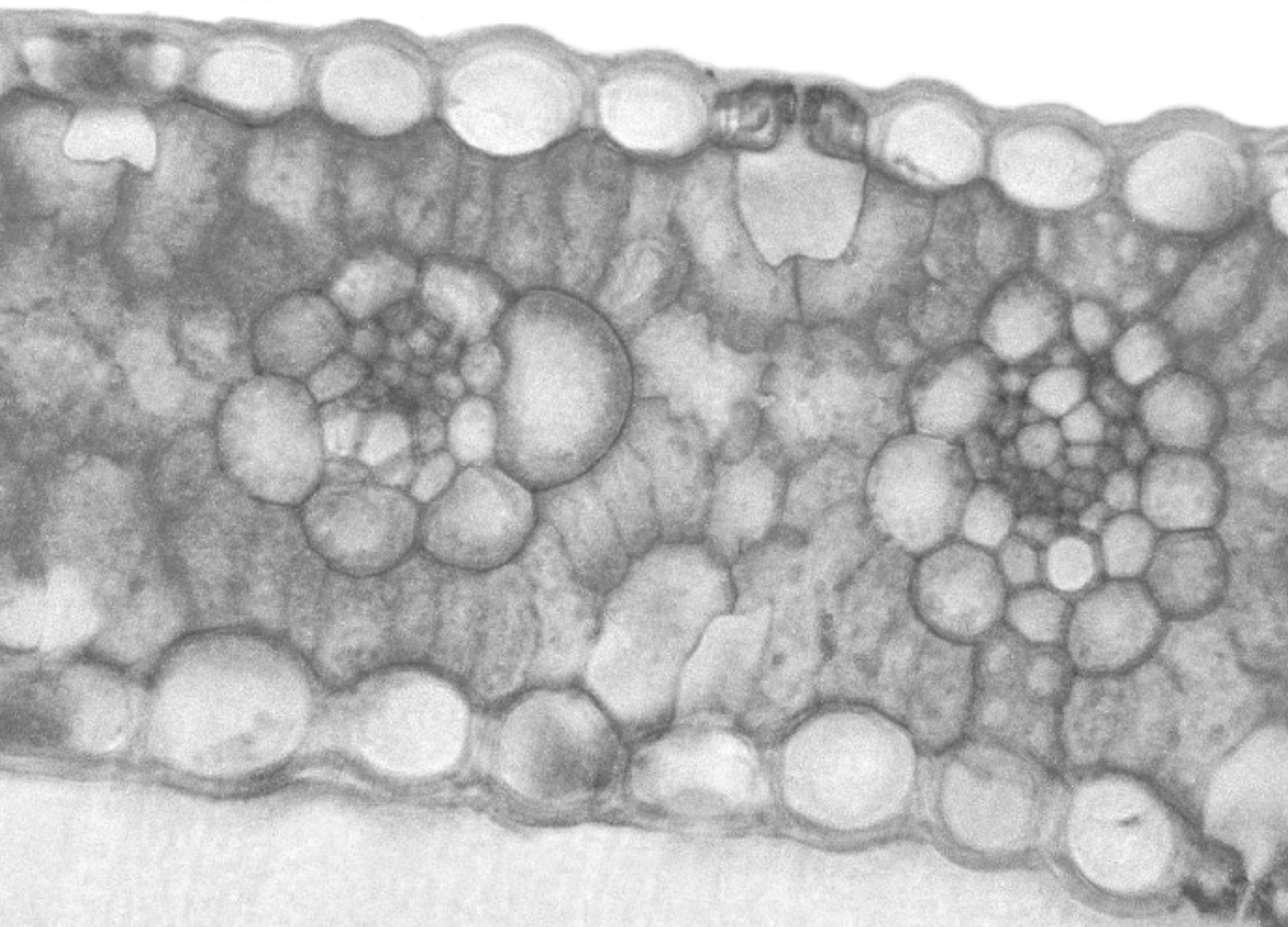


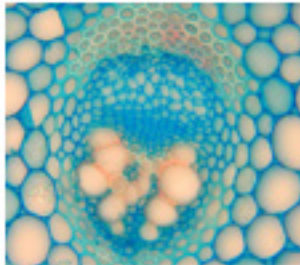
Bau der Pflanze

Ao.Univ.Prof. Dr.phil. Birgit Kartusch

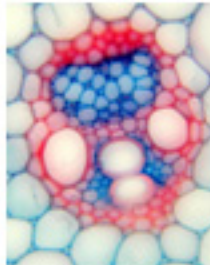


Inhaltsverzeichnis

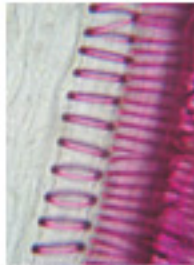
AP 5130001.jpg	<i>Cucurbita pepo</i> – Stängel quer, Eckenkollenchym
AP 5130004.jpg	<i>Tilia sp.</i> – Stamm Übersicht
AP 5130006.jpg	<i>Tilia sp.</i> – Ausschnitt sek. Rinde
AP 5130010.jpg	<i>Clivia nobilis</i> – Wurzel quer
AP 5130013.jpg	<i>Clivia nobilis</i> – Endodermis
AP 5140001.jpg	<i>Iris germanica</i> – Wurzel quer
AP 5140003.jpg	<i>Iris germanica</i> – tertiäre Endodermis
AP 5140014.jpg	<i>Pyrus communis</i> – Fruchtsiel quer, Steinzellen
AP 5120001.jpg	<i>Ranunculus repens</i> – offen kollaterales Gefäßbündel
AP 5120004.jpg	<i>Zea mays</i> – geschlossen kollaterales Gefäßbündel
AP 5120009.jpg	<i>Cucurbita pepo</i> – Stängel längs, Gefäßwandverdickung
AP 5120010.jpg	<i>Cucurbita pepo</i> – Stängel längs, Gefäßwandverdickung
AP 5120015.jpg	<i>Cucurbita pepo</i> – Stängel längs, Gefäßwandverdickung
AP 5120016.jpg	<i>Cucurbita pepo</i> – Stängel längs, Siebröhre
AP 5130008.jpg	<i>Cucurbita pepo</i> – Stängel quer, Siebplatte quer
AP 5170010.jpg	<i>Sambucus nigra</i> – Stamm quer, Plattenkollenchym
AP 5180001.jpg	<i>Aristolochia macrophyllum</i> – älterer Stamm, quer
AP 5180002.jpg	<i>Aristolochia macrophyllum</i> – junger Stamm, quer
AP 5180007.jpg	<i>Salix alba</i> – Holz quer
AP 5180013.jpg	<i>Fraxinus excelsior</i> – Holz quer
AP 5180017.jpg	<i>Pinus sylvestris</i> – Holz quer
AP 5180004.jpg	<i>Pinus sylvestris</i> – Holz längs, radial
AP 5180005.jpg	<i>Pinus sylvestris</i> – Holz längs, tangential
AP 5180010.jpg	<i>Zea mays</i> – Blatt quer
BP 5180017.jpg	<i>Helleborus niger</i> – Blatt quer
BP 5180001.jpg	<i>Caltha palustris</i> – Wurzel quer
BP 5180002.jpg	<i>Caltha palustris</i> – Seitenwurzel
BP 5180008.jpg	<i>Sambucus nigra</i> – Stamm quer, Lenticelle
AP 5180011.jpg	<i>Cucurbita pepo</i> – Stängel längs, Gefäßwandverdickung



AP5120001.jpg



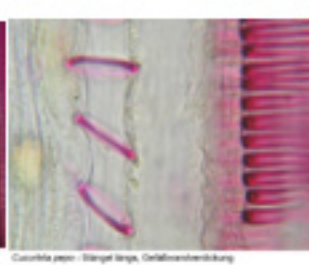
AP5120004.jpg



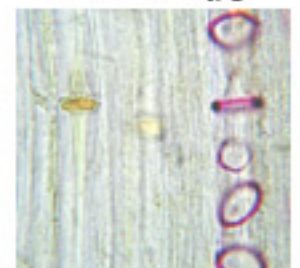
AP5120009.jpg



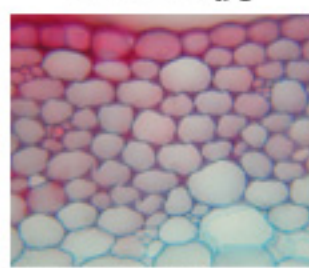
AP5120010.jpg



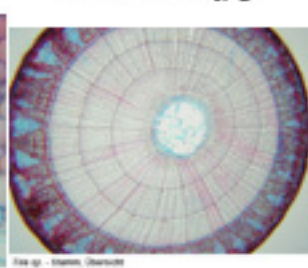
AP5120015.jpg



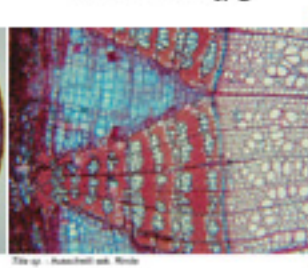
AP5120016.jpg



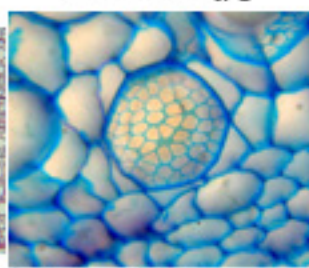
AP5130001.jpg



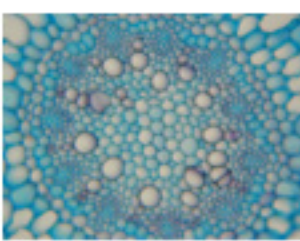
AP5130004.jpg



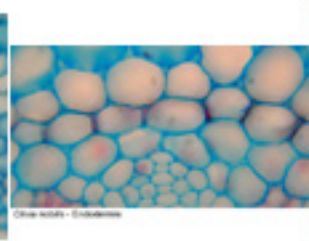
AP5130006.jpg



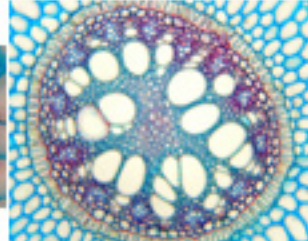
AP5130008.jpg



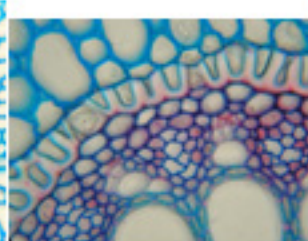
AP5130010.jpg



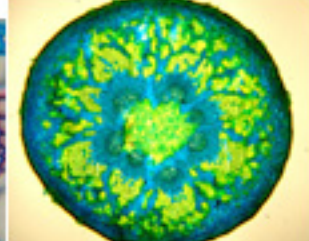
AP5130013.jpg



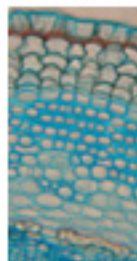
AP5140001.jpg



AP5140003.jpg



AP5140014.jpg



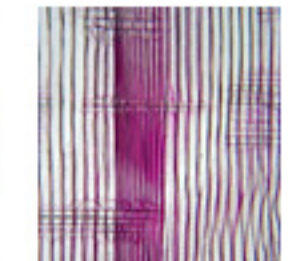
AP5170010.jpg



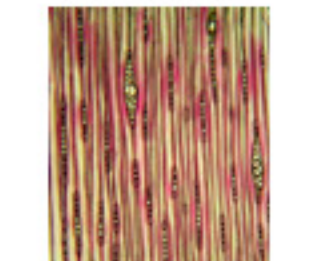
AP5180001.jpg



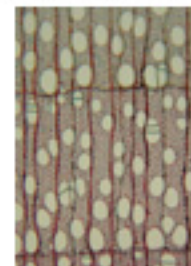
AP5180002.jpg



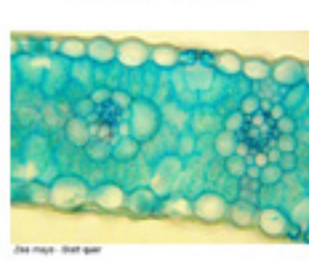
AP5180004.jpg



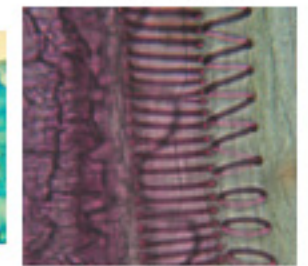
AP5180005.jpg



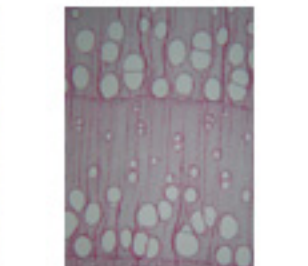
AP5180007.jpg



AP5180010.jpg



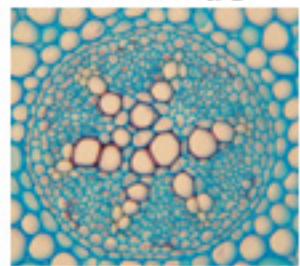
AP5180011.jpg



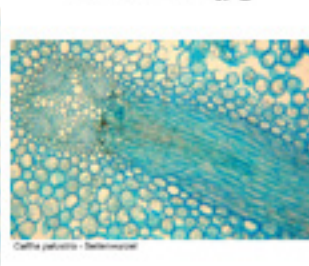
AP5180013.jpg



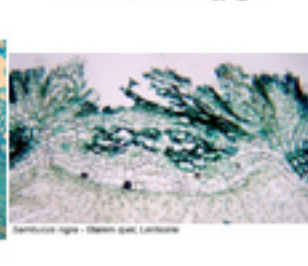
AP5180017.jpg



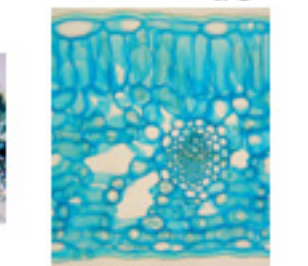
BP5180001.jpg



BP5180002.jpg



BP5180008.jpg



BP5180017.jpg